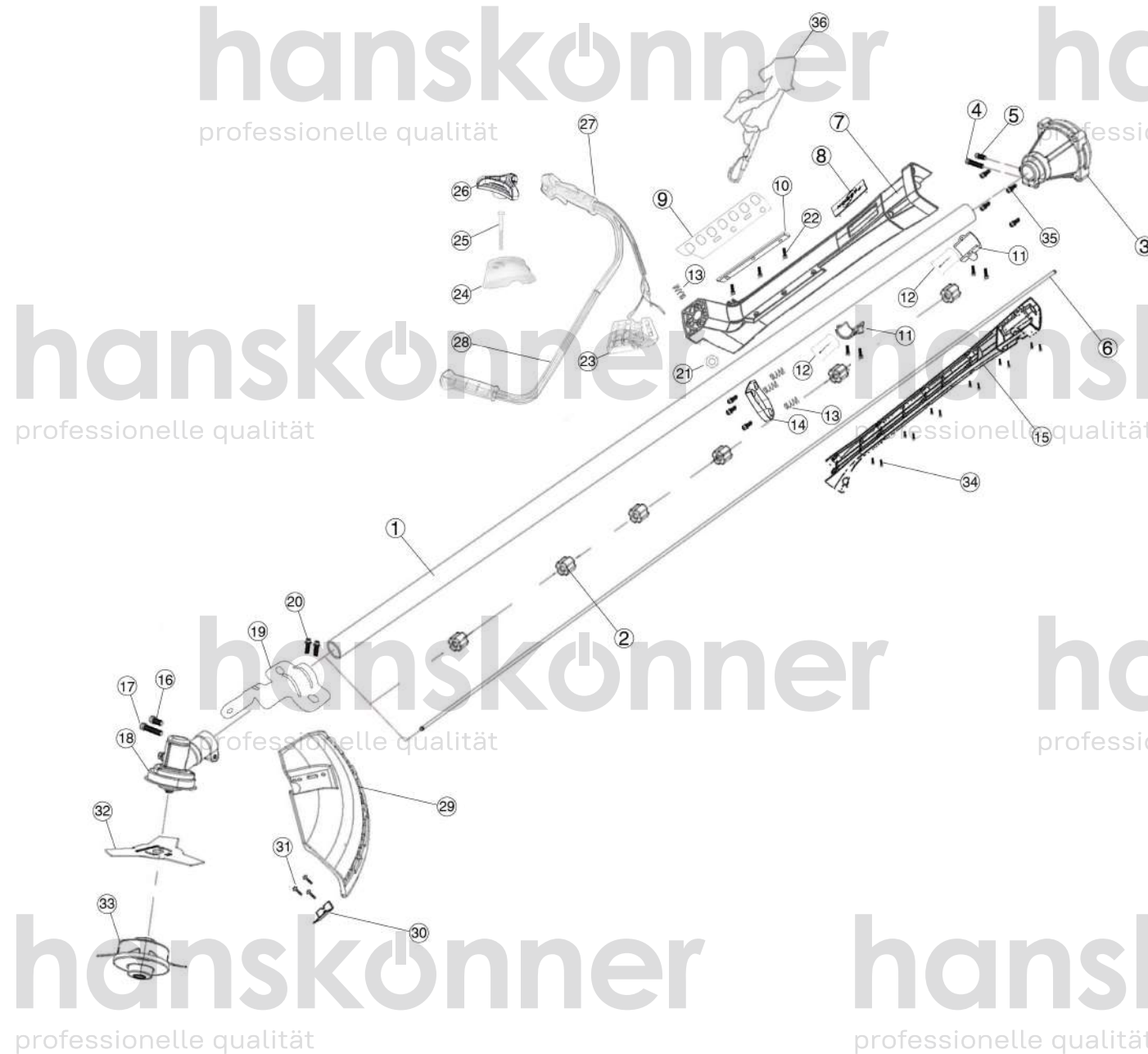
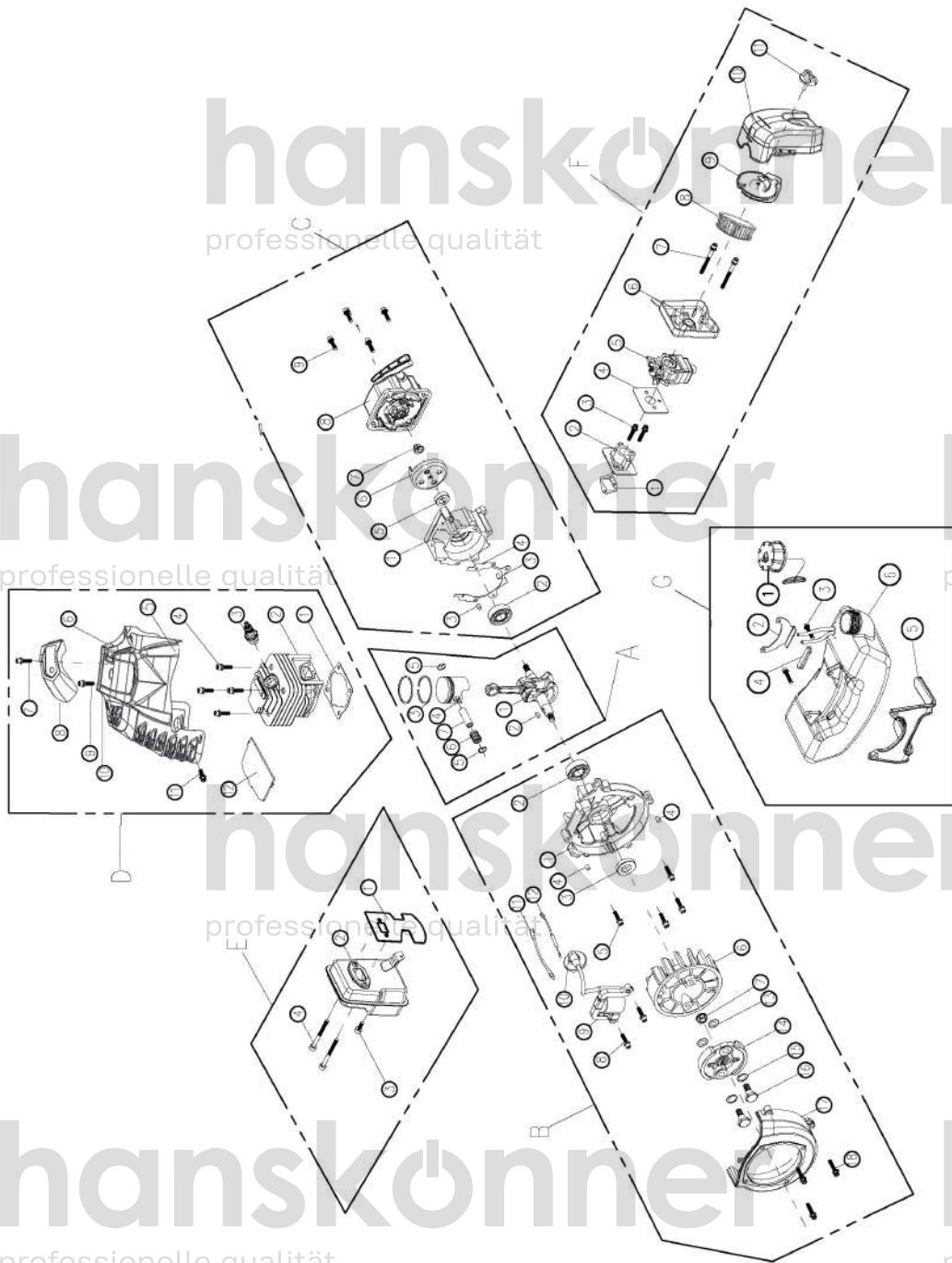


HBT133D



NO.	DESCRIPTION
1	ALUMINUM TUBE
2	OIL BEARINGS
3	CONNECTING DISC ASSEMBLY
4	M6*25 SCREW
5	M5*14 SCREW
6	STRAIGHT SHAFT
7	UPPER COVER OF SHAFT SLEEVE
8	LOGO BLOCK
9	IRON PLATE OF HARNESS
10	FIXING BLOCK OF IRON PLATE
11	FIXING BLOCK OF ALUMINUM TUBE
12	RUBBER DAMPER
13	SPRINGS
14	FIXING SEAT OF SHAFT SLEEVE
15	LOWER COVER OF SHAFT SLEEVE
16	M5*14 SCREW
17	M6*25 SCREW
18	GEAR BOX
19	FIXING PLATE OF GUARD
20	M6*25 SCREW
21	M8 NUT
22	ST4.2X14 SCREW
23	BASE OF HANDLE SEAT
24	FIXING BLOCK OF HANDLE SEAT
25	M8*80 SCREW
26	KNOB OF HANDLE SEAT
27	RIGHT HANDLE
28	LEFT HANDLE
29	GUARD
30	SMALL BLADE ON GUARD
31	ST4.2*14 SCREW
32	3T METAL BLADE
33	SPOOL
34	ST5*16 SCREW
35	M6*30 SCREW
36	HARNESS

ENGINE FOR HBT133D



NO.	DESCRIPTION	NO.	DESCRIPTION
A-1	CRANKSHAFT ASSY	D-1	GASKET
A-2	KEY	D-2	CYLINDER
A-3	PISTON RING	D-3	SPARK PLUG
A-4	PISTON	D-4	SCREW
A-5	PISTON PIN RING	D-5	SCREW
A-6	BEARING	D-6	ENGINE COVER
A-7	PISTON	D-7	SCREW
B-1	CRANKSHAFT CASE	D-8	TOP COVER
B-2	BEARING	D-9	SCREW
B-3	OIL SEAL	D-10	SHIM
B-4	PIN	D-11	SCREW
B-5	SCREW	D-12	WIND SCREEN
B-6	FLYING WHEEL	E-1	GASKET
B-7	NUT	E-2	MUFFLER
B-8	SCREW	E-3	SCREW
B-9	COIL	E-4	SCREW
B-10	SPARK PLUG CAP	F-1	GASKET
B-11	OFF LINE	F-2	INLET PIPE
B-12	OFF LINE	F-3	SCREW
B-13	SHIM	F-4	GASKET
B-14	CLUTCH ASSY	F-5	CARBURETOR
B-15	SHIM	F-6	CARBURETOR HOLDER
B-16	SCREW	F-7	SCREW
B-17	SIDE COVER	F-8	SPONGE
B-18	SCREW	F-9	SPONGE COVER
C-1	CRANKSHAFT CASE	F-10	AIR FILTER COVER
C-2	BEARING	F-11	NUT
C-3	PIN	G-1	TANK CAP
C-4	GASKET	G-2	TANK HOLDER
C-5	OIL SEAL	G-3	SCREW
C-6	DRIVING PLATE	G-4	DAMPING
C-7	NUT	G-5	TANK PROTECTOR
C-8	STARTER ASSY	G-6	TANK
C-9	SCREW		

HBT133D-EX-PS-ST22001